

Quick Start Guide

1 Charge the scanner battery.

2 Download the Clarius App.

Sign in, or create an account if you don't have one.

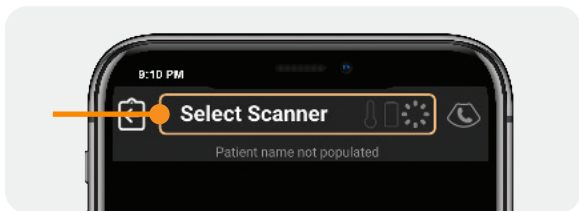


3 Claim your scanner.

Insert the battery. Follow the Clarius App's instructions to claim it.

4 Connect your scanner and smart device.

Select your scanner to connect it.

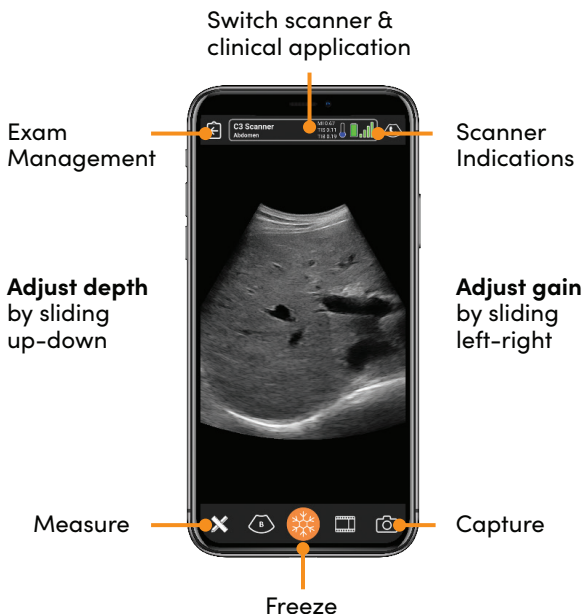


Get help with setup:
clarius.com/support



Read the Clarius Ultrasound Scanner User Manual for full instructions, symbol glossary, and safety information: clarius.com/manuals

Scanning Basics



Clarius Ultrasound Scanner User Manual

Contact us to get a printed copy of the manual within 7 days at no additional cost: clarius.com/support/contact

Video Tutorials

Learn basic scanning functions with our short video tutorials: clarius.com/tutorials



Clarius Mobile Health
130-2985 Virtual Way
Vancouver, BC, V5M4X7
Canada
hello@clarius.com
Phone: +1 (778) 800-9975
www.clarius.com



Get help with setup:
clarius.com/support



Read the Clarius Ultrasound Scanner User Manual for full instructions, symbol glossary, and safety information: clarius.com/manuals