

Quick Start Guide

1 Charge your scanner

2 Download the Clarius App

Sign in, or create an account if you don't have one.

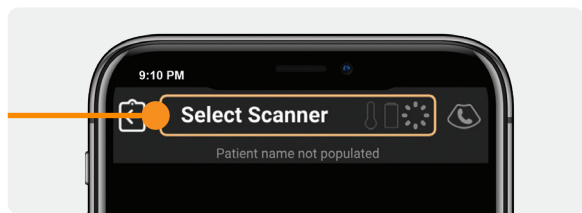


3 Claim your scanner

Power-on your scanner. Follow the Clarius App instructions to claim it.

4 Connect your scanner and smart device

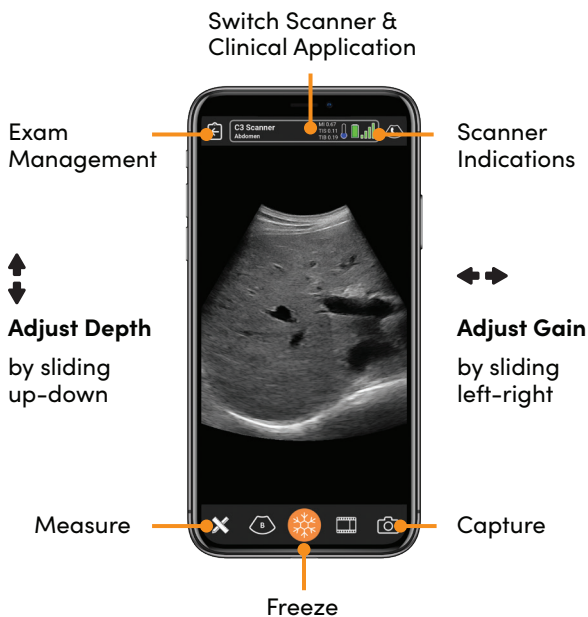
Select your scanner. Apply gel and start imaging.



Quick Start guide is available
in multiple languages

www.clarius.com/quickstart

Scanning Basics



Video Tutorials

Learn basic scanning functions with our short video tutorials: clarius.com/tutorials

Clarius Classroom

Hone your ultrasound skills with on-demand videos from experts: clarius.com/classroom

Clarius Ultrasound Scanner User Manual

Contact us to get a printed copy of the manual within 7 days at no additional cost: clarius.com/support/contact



Clarius Mobile Health
130-2985 Virtual Way
Vancouver, BC, V5M4X7
Canada

hello@clarius.com
Phone: +1 (778) 800-9975
www.clarius.com



Read the Clarius Ultrasound Scanner User Manual for full instructions, symbol glossary, and safety information: clarius.com/manuals